



# Tecnomec Solutions

[www.barcodemarkingmachines.com](http://www.barcodemarkingmachines.com)

We are service providers of a quality range of Software products for various segments like, School/ College/ University Mngt Software, Medical College Campus Mngt Software, Hospital Mngt. Software, HR/ PayRoll, Mfg. ERP etc.

# Profile

Established in the year 2005, we Tecnomec Solutions are one of the prominent names engaged in trading and supplying a superior quality range of capital products, oem products & industrial consumable products. Our range includes metal marking solutions, barcode solutions, electronics, tooling solutions, conventional metal marking solutions, special purpose machines and customized software. We procure these products from the reliable vendors of the market, who design these in compliance with the international standard of quality. Apart from these products, we also offer annual maintenance contracts (marking machines and barcode printers), software and related services to our clients at highly affordable prices. To ensure optimum quality products and solutions, we follow strict vendor policy that guides us most to choose most reliable vendors of the market. Further, to meet the bulk orders in set time frame, we have developed a spacious warehouse. Under the able guidance of our owner - Mr. Anil Kalghatgi, we have established a strong position in the competitive market. He is a mechanical engineer having rich knowledge of this domain and vast industry experience of 17 years in sales and marketing of capital equipment & industrial consumables. Our transparent business dealings have helped us in gaining a vast clientele all across the country.



A Member of



## POS BILLING MACHINES

Today, the billing platform has been redefined. You can now optimize your cost and increase your efficiency levels with the various options of ECR's & POS Terminals available. Presenting the next generation transaction devices which are user friendly & simple unlike conventional computing devices.



Handheld Billing Machine



BP 20 Billing Machine



BP 25T Billing Machine



PT 262 Billing Machine

## CNC DOT PIN MARKING

We are providing supreme quality CNC Dot Pin - Pneumatic machines which are built from exquisite techniques and are used for marking on Name plates, metallic / non-metallic components like Valves, Chassis numbers, Cookware, Crank shafts, Engine numbers, etc.



Basic - Pneumatic CNC Marking Machine



Cobol - Pneumatic CNC Marking Machine



CNC Dot Pin Rotetor - 3 Axis



Controller For CNC Marking Machine

## ETCH MARKING MACHINES

We are offering fine quality Etch Marking Machines which are needed for marking mild steels, hard metals, etc. These are completely energy efficient, high on the quality quotient and are offered in various specifications. We cater to varied requirements of clients' and charge industry leading rates.



Electrolytic Etch Marking Machines



Etch Marking Machines



Automatic Etch Marking Machines



Pencil Etching Machine

## ROLL MARKING MACHINES

We are offering various sorts of Roll Marking Machines to our customers'. These are precisely developed from sophisticated technology and are offered with a dynamic balancing system and hydraulic lock system. These are rigidly built and used in various industrial applications.



Hydraulic Roll Marking Machine



Pneumatic Roll Marking Machine

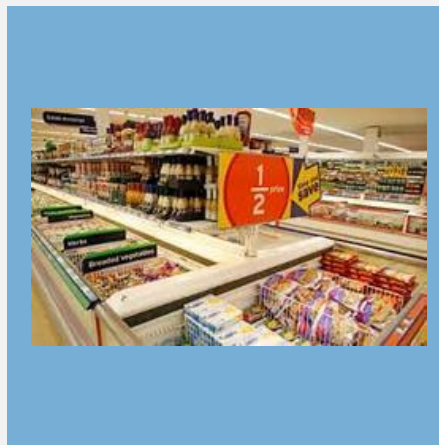


Horizontal Roll Marking Machine

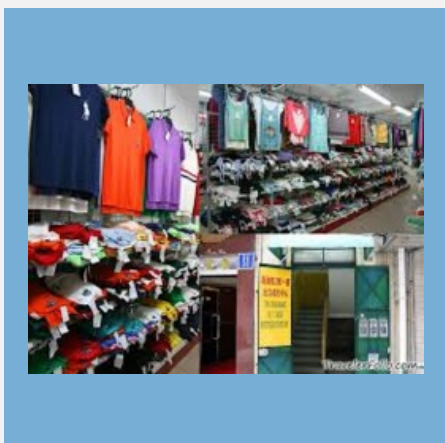
# OTHER PRODUCTS:



School Plus Software



Retail Billing Software



Garment Plus Softwares

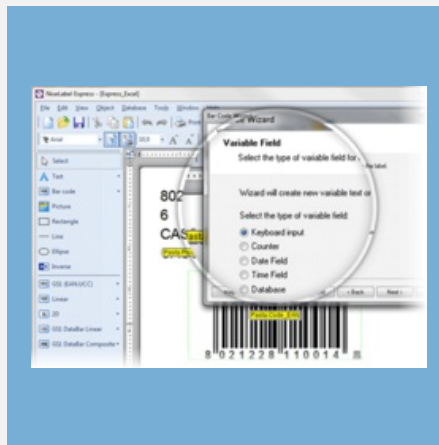


Manufacturing ERP Software

# OTHER PRODUCTS:



F&B Billing Software



Barcode Label Printing Software



Blank Die-Cut Labels



Thermal Transfer Ribbons



## OTHER PRODUCTS:



PT 2124K Billing Machine



BP 85T Billing Machine



BP 85 DMP Billing Machine

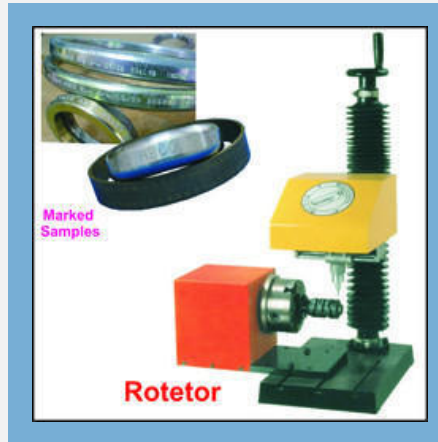


BP 5000 Billing Printer

# OTHER PRODUCTS:



BP Milko Dairy Billing Machine



CNC Marking Machine Model "rotetor"



Hand Engraver



Etch Marking Accessories

# Factsheet

Year of Establishment : 2005

---

Nature of Business : Supplier, Service Provider

---

Total Number of Employees : Upto 10 People

---

Primary Competitive Advantage : Good Financial Position Large Product Line & TQM

---



A Member of



## CONTACT US

### **Tecnomec Solutions**

Contact Person: Mr. Anil Kalghatgi

Office No. 112, Building No. T-5, 1st Floor, Swastik Regalia,  
Waghbil Road, Off. G. B. Road, Thane West  
Thane - 400615, Maharashtra, India

 +91-8373905492

 [www.barcodemarkingmachines.com](http://www.barcodemarkingmachines.com)

A Member of

